

**Join us for our Third WSC Spring Picnic Event at  
TWIN LAKES PARK**

Pavilion # 2, Parking Lot D  
219 Twin Lakes Road, Latrobe, PA

Accessible via Donahue and George Station Roads from Route 30  
See link to Twin Lakes Park in email

**SATURDAY, MAY 13 - 12 noon**

Perfect view near the upper lake, Pavilion #2, Parking Lot D. Nearby Comfort Station is handicapped accessible. Vietnam Veterans of Westmoreland County Memorial and small playground areas are also near by

**Buffet Lunch includes:**

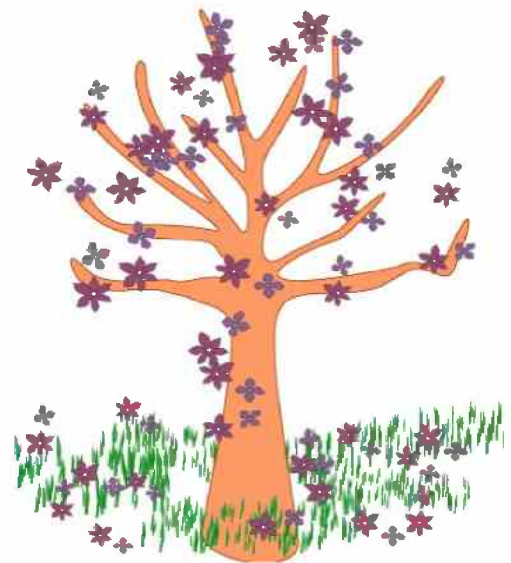
Fried chicken \* Potato Salad  
Pulled Pork Slider Sandwiches  
Cole Saw \* Baked Beans  
Cookie Tray \* and more

**Cost \$20 per person  
(includes pavilion rental fee)**

Bring your own beverage -  
Club will provide a cooler with filtered ice water

***Several activities available for your pleasure:***

Walking trail (2.5 miles) around both the upper and lower lakes  
Biking nearby (1.3 miles) or road riding of approx. 15 miles to Forbes Road Post Office  
Rent paddle boats, kayaks or canoes at boathouse  
Cornhole - Games - Cards - Fishing



**\*\*\* Gift Basket Raffle \*\*\***

***Reservations due by Saturday, May 6 - make checks payable to WSC***

**RESERVATION FORM**

Name(s) \_\_\_\_\_

Amt. enclosed (\$20.00 p/p) \_\_\_\_\_ Tel. # \_\_\_\_\_

**Mail form and check to: Priscilla Gagnon  
931 Castleview Drive, North Huntingdon, PA 15642**

***To volunteer to help or questions, contact Lucinda at 415-847-7884***